

VC732102 MUK Rev1

morphy richards®
smart ideas for your home

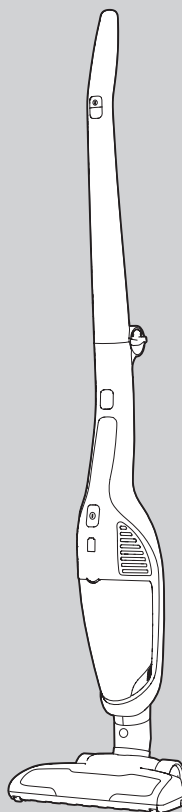


Supervac

2-in-1 Cordless Bagless Upright Vacuum Cleaner



Please read and keep these instructions for future use



CHARGE THE PRODUCT FULLY BEFORE FIRST USE

For competitions, product hints and tips
and more join us at



www.morphyrichards.co.uk/blog



www.facebook.com/morphyrichardsuk



[@loveyourmorphy](https://twitter.com/loveyourmorphy)

www.morphyrichards.com

* Register online for your 2 year guarantee. See back of this instruction book for details. (UK and Ireland customers only)

Health and Safety

The use of any electrical appliance requires the following common sense safety rules.
Please read these instructions carefully before using the product.

- **WARNING: Whenever the cleaner is in use, due to the risk of entrapment in rotating parts, keep loose clothing, hair, fingers etc. away from the brush bar, nozzle and any handheld accessories.**
- **WARNING: Disconnect from the mains supply and remove the handheld vacuum cleaner (10) before carrying out any routine maintenance, such as cleaning any blockages, changing any filters or accessing the motorised floor brush.**
- This appliance can be used by children aged from 8 years and above and persons with reduced physical, sensory or mental capabilities, or lack of experience and knowledge, if they have been given supervision or instruction concerning the use of the appliance in a safe way and understand the hazards involved.
- Only use the mains adaptor supplied with the unit.
- Children shall not play with the appliance.
- Cleaning and user maintenance shall not be undertaken by children without supervision.

Personal safety

- **WARNING: Only lift the product by the handle (1) and never pick the cleaner up by the motorised floor brush.**
- **WARNING: Misuse of the appliance could cause personal injury.**
- To prevent accidental contact with the rotating brush, always remove the handheld unit before fitting, removing or cleaning the motorised floor brush (21).
- Never use in the presence of explosive liquid or vapours.
- Never pick up inflammable or poisonous liquids such as petrol, copier toner or other volatile substances. Never pick up acids, asbestos or asbestos dust.
- Never touch the adaptor, product or cable with wet hands.
- Unprofessional repairs can be dangerous for users.
- To protect against fire, electric shock and personal injury, do not immerse cord, mains adaptor or cleaner in water or other liquid.
- The appliance must never be left running unsupervised.

Location

- Do not use or keep this product outside.
- Do not store the appliance near hot surfaces eg. ovens or heating appliances.

Product safety

- This appliance is not intended for liquid/wet pick up.
- Never use the appliance without the filter being installed.
- Never use the appliance to vacuum hot ashes, broken glass, sharp objects or liquids.
- Never modify the cleaner in any way.
- Use only Morphy Richards spare parts and accessories.

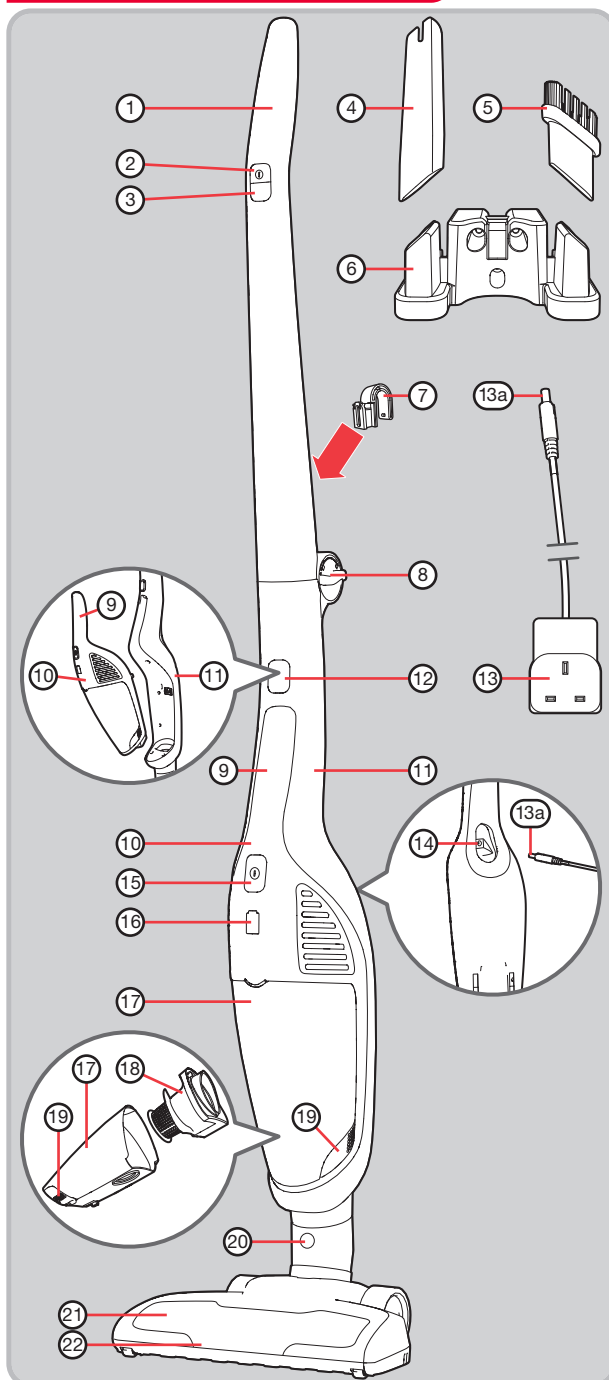
Electrical requirements

- Check that the voltage on the rating plate of the mains adaptor corresponds with your house electricity supply which must be A.C. (Alternating Current).
- The battery is not a serviceable item. Remove at the end of the product's life for recycling.

Contents

| | |
|--|----|
| Health and safety | 2 |
| Electrical requirements | 2 |
| Product overview / Features | 4 |
| Charging / storage mount fixing | 5 |
| Dual functionality | 5 |
| Upright vacuuming: assembly | 6 |
| Upright vacuum cleaning | 6 |
| Handheld vacuum cleaning | 7 |
| Using the attachments on the handheld vacuum cleaner | 7 |
| Tool storage | 8 |
| Maintenance | 8 |
| Maintenance - emptying the dust canister | 8 |
| Maintenance - filters | 9 |
| Maintenance - motorised floor brush | 9 |
| Maintenance - trouble shooting | 10 |
| Storage | 10 |
| Disposal | 11 |
| Contact us | 11 |
| Notes | 11 |
| Guarantee | 12 |

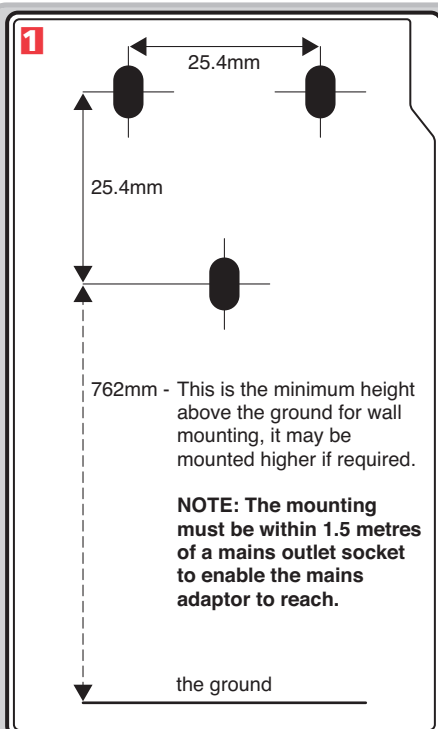
Product overview



Features

- (1) Upright handle
- (2) Upright on/off button
- (3) Power selector button
- (4) Crevice tool
- (5) Dusting brush
- (6) Charging / storage mount
- (7) Storage hook
- (8) Upright handle release dial
- (9) Handheld vacuum cleaner handle
- (10) Handheld vacuum cleaner
- (11) Main vacuum cleaner body
- (12) Handheld vacuum cleaner release button
- (13) Mains adaptor
- (13a) Mains adaptor connector
- (14) Charging inlet
- (15) Handheld vacuum cleaner on/off button
- (16) Charging / power indicator light
- (17) Dust canister
- (18) Dust canister filter holder assembly
- (19) Dust canister release buttons (on either side of the dust canister)
- (20) Floor brush release button
- (21) Motorised floor brush
- (22) Floorhead lights

Charging / storage mount fixing



During unpacking of the product, make sure that the packing insulation piece between the handheld vacuum cleaner (10) and the main vacuum cleaner body (11) is removed.

Charge the product fully before first use.

- 1** The charging / storage mount (6) must be fixed to a suitable wall with three 4mm (No. 8) pan-head screws (NOT PROVIDED). The screws and plug must be suitable for the relevant wall type and be capable of supporting a minimum of 5kg.

The position of the three holes for the fixing plugs should be as shown in the diagram (see left).

After the charging / storage mount has been fixed to the wall, fit the storage hook (7) to the rear of the upright handle (1) by locating in the slot provided and then lifting up until it clicks into position.

To fit the vacuum cleaner onto the charging / storage mount, simply hook the product onto the mount using the storage hook.

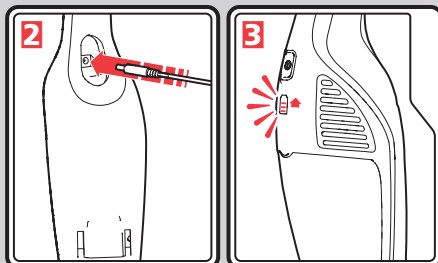
- 2** To charge, plug the mains adaptor (13) into the mains supply and switch on, then plug the mains adaptor connector (13a) into the charging inlet (14) on the underside of the handheld vacuum cleaner (10), this is accessible through a hole in the back of the main vacuum cleaner body (11).

Then hook the vacuum cleaner onto the wall mounted charging / storage mount whilst charging.

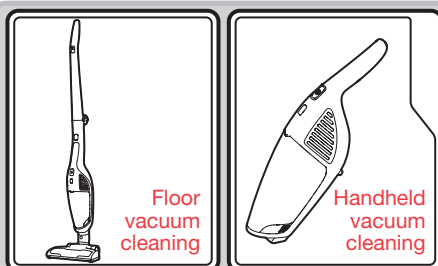
- 3** The four charging/power indicator lights (16) will illuminate one by one from the lowest to the uppermost in a continuous loop to indicate the product is charging.

As charging continues, each light from the lowest to the uppermost will remain constantly illuminated one-by-one to indicate how much the unit has charged. All lights will extinguish when the product is fully charged. A full charge may take 5 hours.

When fully charged, unplug the mains adaptor connector and switch off / unplug the mains adaptor from the mains supply.



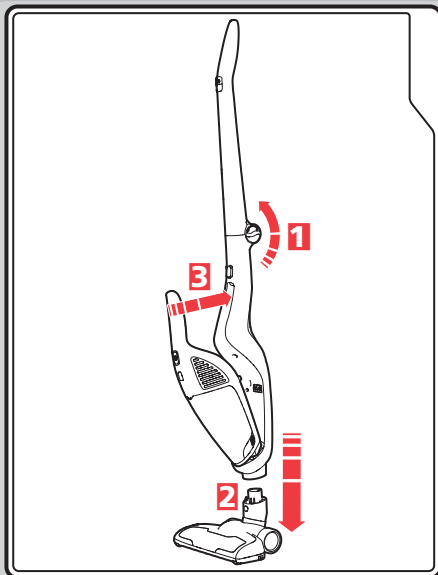
Dual functionality



Your vacuum cleaner can easily be configured into two different cleaning modes:

- Upright vacuum cleaner for floors and carpets.
- Handheld vacuum cleaner (10) which can be carried with you whilst cleaning hard to reach places.

Upright vacuuming: assembly



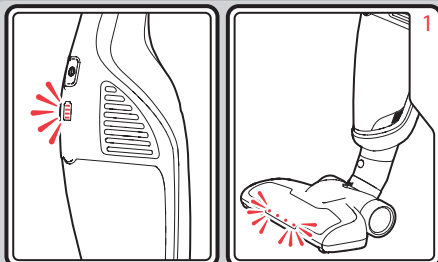
- 1** Swing the upright handle **(1)** on the main vacuum cleaner upwards until it clicks into place in an upright position.
- 2** Place the motorised floor brush **(21)** on a level surface and align the connector on the neck of the motorised floor brush with the connector hole on the base of the main vacuum cleaner body **(11)**.

Holding the neck of the motorised floor brush in place, lower the main vacuum cleaner body onto the motorised floor brush until you hear the two pieces click into place.

When attaching the motorised floor brush, ensure that the latching mechanism is fully locked in place to ensure electrical connection is made.

- 3** Fit the handheld vacuum cleaner **(10)** into the cavity on the main vacuum cleaner body by firstly sliding the suction end into place over the suction hole in the main vacuum cleaner body cavity, then push the handle end in to place until a click is heard.

Upright vacuum cleaning

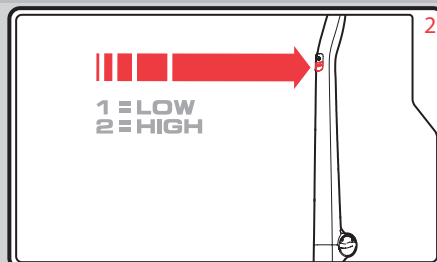


Turn the product on by pressing the upright on/off button **(2)**.

When the product is turned on, the handheld vacuum cleaner power indicator light **(16)** will illuminate blue and the floorhead lights **(22)** will illuminate.

NOTE: When the battery reduces to a pre-set level the product will stop, the light will extinguish and the product must be recharged.

Two power settings are provided. When switched on, the unit will automatically start at high power. By pressing the power selector button **(3)** once, the power will drop to low. Press the button a second time to switch the power back to high (see diagram 2, above right). Further presses of the power selector button will toggle the power between low and high.

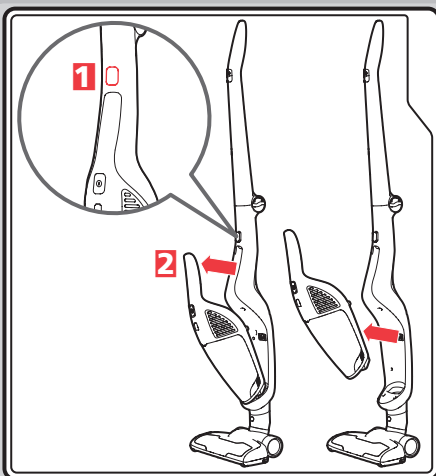


Using the product on low power will be sufficient for light cleaning and will extend the running time until the product needs to be recharged.

You can also turn the product on with the handheld vacuum cleaner on/off button **(15)**. Switching the power on using this button will not run the rotating brush bar in the motorised floor brush **(21)**.

NOTE: There are no variable power settings on the handheld vacuum cleaner **(10)**.

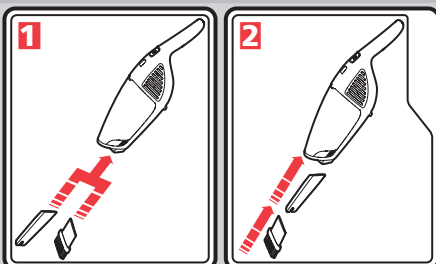
Handheld vacuum cleaning



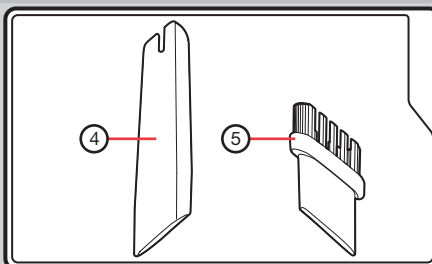
This function is ideal for cleaning stairs, curtains, upholstery and hard to reach places.

- 1** To separate the handheld vacuum cleaner (10) from the main vacuum cleaner body (11), press the handheld vacuum cleaner release button (12).
 - 2** Pull the handheld vacuum cleaner away from the main vacuum cleaner body (11).
- After use, return the handheld vacuum cleaner (10) to the cavity on the main vacuum cleaner body (11) by firstly sliding the suction end into place over the suction hole in the main vacuum cleaner body cavity, then push the handle end in to place until a click is heard.
 - The handheld vacuum cleaner only has a high power mode, not variable power.

Using the attachments on the handheld vacuum cleaner



- 1** Push the accessories (4) or (5) into the suction inlet on the end of the handheld vacuum cleaner.
- 2** Alternatively, for extra reach, attach the accessories together and push the assembly into the suction inlet on the end of the handheld vacuum cleaner.



List of attachments

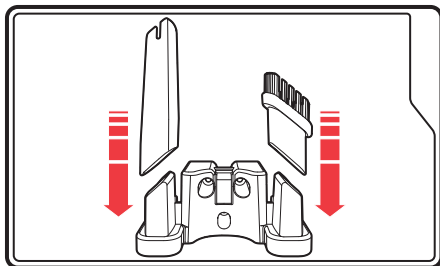
Crevice tool (4) for awkward places, corners and behind radiators etc. This tool is also useful on stairs.

Dusting brush (5) for carpet, upholstery and stairs etc.

Tool storage

When not in use, the attachments may be stored on the storage / charging mount (6) as shown below.

The storage / charging mount should already be fitted to the wall (see 'Charging / storage mount fitting' page 5).



Maintenance

WARNING: Always remove the handheld vacuum cleaner from the main vacuum cleaner body and the mains adaptor from the mains supply before undertaking any maintenance or cleaning procedures.

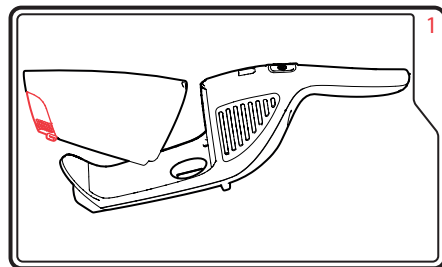
Your cleaner is manufactured to withstand normal day-to-day use, but an occasional wipe over with a damp cloth will help maintain its good looks. Take care not to get the electrical connections wet.

Abrasive cleaners should not be used.

Maintenance - emptying the dust canister

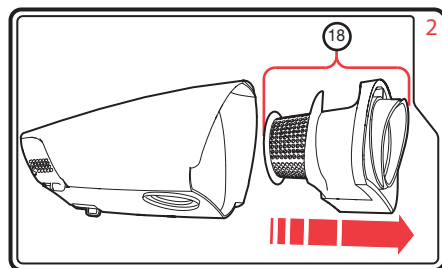
Empty the dust canister (17) regularly even if it does not look full, this will maintain the performance.

1. Remove the handheld vacuum cleaner (10) from the main vacuum cleaner body (11) (see 'Handheld vacuum cleaning', page 7).
2. Press the dust canister release buttons (19) and pull the dust canister away from the handheld vacuum cleaner.



3. Remove the dust canister filter holder assembly (18) and empty the dirt from inside the dust canister. Care should be taken not to release the dust until over a bin.

At the same time, ensure the top and bottom areas of the cyclone cone (18a) (see image 3 on page 9) are cleaned and free from dust or other debris.



4. It is recommended that the individual parts of the dust canister filter holder assembly (18 - including the pleated filter 18b) (see image 3 on page 9) are brushed or tapped clean before refitting on each empty of the dust canister (to access, see 'Maintenance - filter' section). In addition, they must be washed monthly as instructed in the 'Maintenance - filter' section.
5. Fit all parts of the dust canister filter holder assembly (18) back together, then refit back into the dust canister (17), then replace the dust canister back onto the handheld vacuum cleaner.
6. Replace the handheld vacuum cleaner (10) back into the main vacuum cleaner body (11) if upright cleaning.

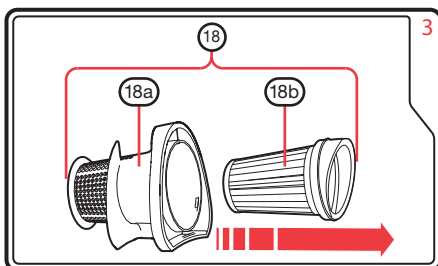
Maintenance - filters

The guarantee may be invalidated if the motor is damaged due to: using the appliance without the filters installed; not cleaning the filters; or not replacing a damaged filter.

Cleaning the dust canister filters

To maintain suction, the individual parts of the dust canister filter holder assembly (18) must be cleaned each time the dust canister (17) is emptied.

1. Follow steps 1-4 of 'Emptying the dust canister'.
2. Pull the pleated filter (18b) out from the filter holder assembly (18) by slightly twisting it anti-clockwise, then pulling it away from the cyclone cone (18a).



3. Every month, wash the pleated filter (18b) in luke-warm water and thoroughly air dry before re-fitting, as well as cleaning the cyclone cone (18a).

IMPORTANT: Do not wash the filters with hot water or detergents.

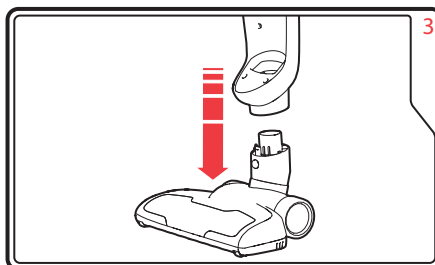
IMPORTANT: Do not use heated appliances to dry the filters.

4. Fit all parts of the dust canister filter holder assembly (18) back together, then refit back into the dust canister (17), then replace the dust canister back onto the handheld vacuum cleaner.
5. Replace the handheld vacuum cleaner back into the main vacuum cleaner body (11) if upright cleaning.

Maintenance - motorised floor brush

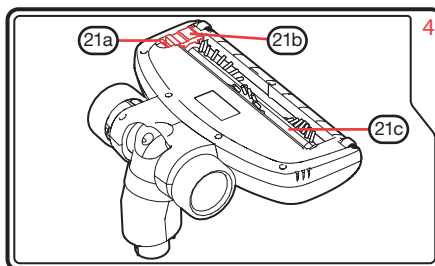
If the motorised floor brush (21) is stalled, eg. by a foreign object or if used on very deep pile carpet, switch off, remove the cause of the stall, and leave for a few minutes to allow the floor nozzle protection to self reset.

To clean the motorised floor brush, you must remove the handheld vacuum cleaner as shown in 'Handheld vacuum cleaning', page 7. Then, press the floor brush release button (20) and pull the motorised floor brush away.

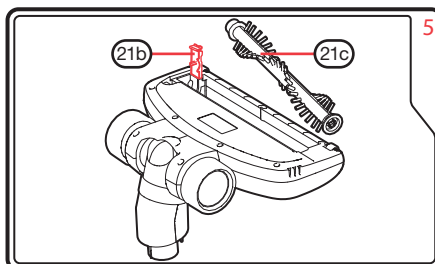


Turn the motorised floor brush (21) over to inspect the rotating brush bar (21c).

Push the locking button (21a) on the brush bar cover (21b) forward to unlock the cover.



Open the brush bar cover (21b) and lift the rotating brush bar (21c) out. Pull away any hairs or fibres from the rotating brush bar, checking especially around the ends of the brush bar. If they are tightly wound around the brush, carefully snip the fibres with scissors, being careful not to damage the rotating brush bar, pull away from the rotating brush bar and dispose of. Also, check for any blockages to the floorhead suction inlet - if any are noted, clear before replacing the rotating brush bar. Replace the rotating brush bar and brush bar cover in their original position and re-lock the locking button (21a).



Maintenance - troubleshooting

- **“Does not pick-up”/ “Motorised floor-brush running slow or soon stops”**

Check for hairs/fibres that may be wrapped around the rotating brush-bar.

IMPORTANT: Remove the brush bar as described on page 9. Fine hairs or fibres may be caught unseen in the ends of the brush bar. Carefully remove the hairs and re-fit the brush bar.

- **“Does not pick-up” / “Suction of handheld cleaner has reduced”**

In addition to emptying the dust canister, it is very important that the individual parts of the dust canister filter holder assembly (18) (see image 3 on page 9) are regularly and thoroughly cleaned. See ‘Maintenance - filters’ section on page 9 for details of how to access and clean them.

- **“Does not pick-up from the floor but the floor brush is rotating and the handheld has good suction”**

Switch off the product, remove the motorised floor brush and check for blockages in the floorhead suction inlet connector area between the motorised floor brush and the main vacuum cleaner body.

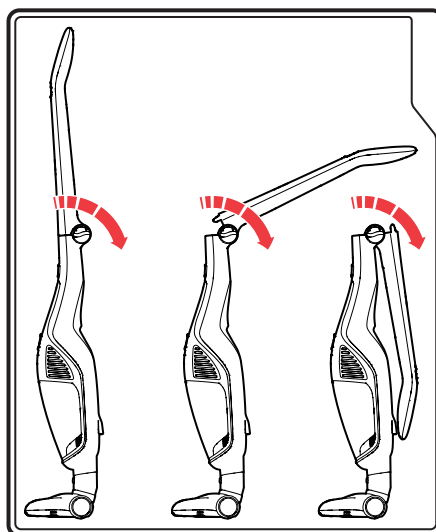
- **“Product not charging”**

Check the indicator light (16) on the front of the handheld cleaner is glowing to indicate that charging is in process. If the indicator is not showing, check the mains adaptor is fully fitted into the mains socket and the socket is switched on.

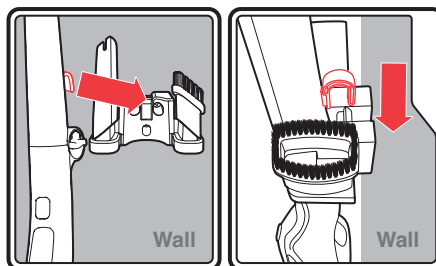
Storage

1. Fit the handheld vacuum cleaner (10) back into the cavity on the main vacuum cleaner body (11) by firstly sliding the suction end into place over the suction hole in the main vacuum cleaner body cavity, then push the handle end in to place until a click is heard.
2. The upright handle (1) is collapsible for compact storage by turning the upright handle release dial (8) towards the front of the main vacuum cleaner body.

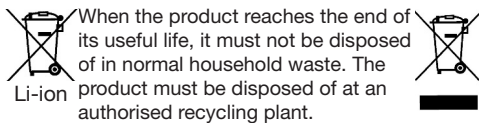
WARNING: When locking the handle, keep this area clear. Be careful not to trap your fingers or any loose items of clothing etc.



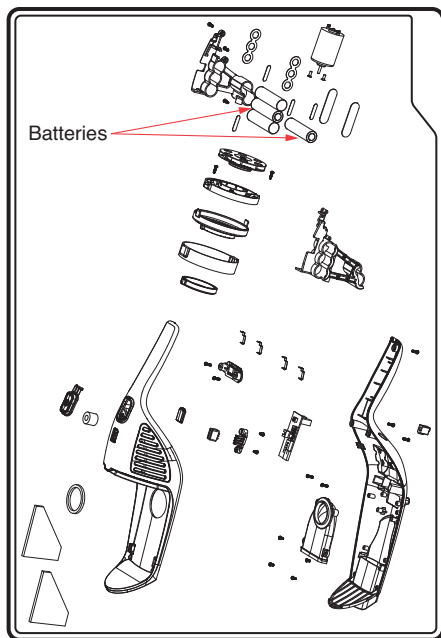
3. Place the tools onto the charging / storage mount (6) (see ‘Tool storage’, page 8).
4. Rather than compact storage (as described in point 2), you may wish to hang the product from the charging / storage mount (which must be attached to a wall using suitable screws and wall plugs). Use the storage hook (7) to hang the product from the lip in the centre of the charging / storage mount.



Disposal



The handheld vacuum cleaner (10) should only be disassembled by a competent engineer and the battery removed and disposed of at an authorised recycling plant. Your local authority will have a centre which accepts such waste for recycling.



WARNING: Batteries and products containing batteries must never be disposed of in fires.

Contact us

Helpline

If you are having a problem with your appliance, please call our Helpline, as we are more likely to be able to help than the store you purchased the item from.

Please have the product name, model number and serial number to hand when you call to help us deal with your enquiry quicker.

UK Helpline: **0344 871 0944**

IRE Helpline: **1800 409 119**

Spares: **0344 873 0710**

Talk To Us

If you have any questions or comments, or want some great tips to help you get the most out of your products, join us online:

Blog: www.morphyrichards.co.uk/blog

Facebook: www.facebook.com/morphyrichardsuk

Twitter: [@loveyourmorphy](https://twitter.com/loveyourmorphy)

Website: www.morphyrichards.com

Notes

VC732102 MUK Rev1 11/16

Registering your 2 year guarantee

Your standard 1 year guarantee is extended for an additional 12 months when you register the product within 28 days of purchase with Morphy Richards. If you do not register the product with Morphy Richards within 28 days, your product is guaranteed for 1 year. To validate your 2 year guarantee, register with us online at www.morphyrichards.co.uk

Or call our customer registration line

UK 0344 871 0242

IRE 1800 409 119

N.B. Each qualifying product needs to be registered with Morphy Richards individually.

Please note that the 2 year guarantee is only available in the UK and Ireland. Please refer to the 1 year guarantee for more information.

Your 1 year guarantee

To qualify for the 1 year guarantee, the appliance must have been used according to the instructions supplied.

It is important to retain the retailer's receipt as proof of purchase. Staple your receipt to this back cover for future reference.

Please quote the following information if the product develops a fault. These numbers can be found on the base of the product.

Model no.

Serial no.

All Morphy Richards products are individually tested before leaving the factory. In the unlikely event of any appliance proving to be faulty within 28 days of purchase, it should be returned to the place of purchase for it to be replaced. If the fault develops after 28 days and within 1 year (2 years if registered) of original purchase, you should contact the Helpline number quoting Model number and Serial number on the product, or write to Morphy Richards at the address shown.

You may be asked to return a copy of proof of purchase. Subject to the exclusions set out below (see Exclusions), the faulty appliance will then be repaired or replaced and dispatched usually within 7 working days of receipt.

If you suspect a fault, follow the simple checks detailed below before retrying the appliance or calling the helpline.

- Check the filters for blockages and clean.
- Check the tools / tubes for blockages.
- Check the appliance is charged.
- Check the socket used for charging is working and the charging adaptor is firmly in the socket during charging.

If, for any reason, this item is replaced during the 1 year guarantee period, the guarantee on the new item will be calculated from original purchase date. Therefore it is vital to retain your original till receipt or invoice to indicate the date of initial purchase. To qualify for the 1 year guarantee, the appliance must have been used according to the instructions supplied.

This appliance is intended for domestic use only. Misuse or use for commercial or any other purpose will render the guarantee invalid.

Exclusions

Morphy Richards shall not be liable to replace or repair the goods under the terms of the guarantee where:

- 1 The fault has been caused or is attributable to accidental use, misuse, negligent use or used contrary to the manufacturer's recommendations or where the fault has been caused by power surges or damage caused in transit.
 - 2 The appliance has been used on a voltage supply other than that stamped on the products.
 - 3 Repairs have been attempted by persons other than our service staff (or authorised dealer).
 - 4 The appliance has been used for hire purposes or non domestic use.
 - 5 The appliance is second hand.
 - 6 Morphy Richards reserves the right not to carry out any type of servicing under the guarantee at its discretion.
 - 7 The guarantee excludes consumables such as the filter.
- This guarantee does not confer any rights other than those expressly set out above and does not cover any claims for consequential loss or damage. This guarantee is offered as an additional benefit and does not affect your statutory rights as a consumer. Morphy Richards products are intended for household use only. See usage limitations within the location safety instructions.

Disclaimer

Morphy Richards has a policy of continuous improvement in product quality and design. The company, therefore reserves the right to change the specification of its models at any time.



For electrical products sold within the European Community. At the end of the electrical products useful life, it should not be disposed of with household waste. Please recycle where facilities exist. Check with your Local Authority or retailer for recycling advice in your country.



Battery should be removed at the end of the product's life for recycling.

Li-ion

**IF YOU ARE HAVING A PROBLEM
WITH ONE OF OUR PRODUCTS,
CALL OUR HELPLINE:**

UK: 0344 871 0944
EIRE: 1800 409 119
SPARES: 0344 873 0710

morphy richards

The After Sales Division
Morphy Richards Ltd
Mexborough,
South Yorkshire,
England, S64 8AJ

www.morphyrichards.com

